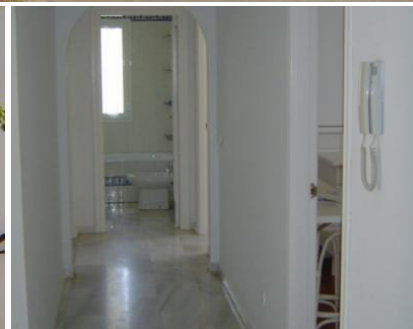


ET127 Guadalbeach, San Pedro, Marbella, 3 double bedroom apartment



Key features

- * 3 large double bedrooms
- * 2 ensembles
- * 50 metres from the beach
- * Spacious living accommodation
- * Beautiful maintained gardens
- * Swimming pool
- * Tennis court
- * Access to bars, restaurants
- * 5 mins San Pedro, 2 KM Puerto Banus

Description

This 3 double-bed apartment is located 50 metres from the beach with restaurants and beach bars nearby. San Pedro is a very popular and sought after location due to its authenticity and closeness to both Puerto Banus & Marbella and easy access to the motorway. A 30-min walk along the beach will bring you into the heart of Puerto Banus so its location provides a very interesting holiday rental or investment property. The property comprises 3 double beds, 2 ensuite, kitchen, 3 reception rooms & cloak room. Total size is 104m² with 35m² of terraces. The apartment runs east to west so the apartment is bathed in sunlight all day long. The beautiful gardens are well maintained as is the communal pool and tennis court. Great investment opportunity.

Price: 205,000€

Elbrus Tolima Land & Estates Management Limited

T: 0844 544 0822 www.elbrustolima.co.uk